

**MODULAR KIT**



**GULL WING SERIES**

**GLIDER SERIES**

**RIBLET SERIES**



OR  
■ ■ ■ ▶



OR  
■ ■ ■ ▶



# WARNING

The use of this product exposes the user to many unavoidable and unexpected risks, injury, DANGERS and HAZARDS. NSP will not be held liable for any damage to property or any personal injury caused by any use, misuse, abuse, accidental or irresponsible use of this product by the user.

Hydrofoiling can be DANGEROUS to anyone in the vicinity of its use and must be taken seriously. We recommend to seek the guidance of professional instructors and experienced foilers. Improper and/or unreasonable use of this hydrofoil may result in DEATH or SERIOUS INJURY to ANY part of your body and to OTHERS. As you learn the sport, work within your own limitations and do NOT try to exceed them. Always wear an USCG (Type III or V) approved lifejacket, a helmet and leash.

If you are below the age of 18, you should have your parent or guardian read and explain these warnings, cautions and instructions to you. Do not use this product unless you are under the guidance of an experienced foiler.

# CONTENTS:

Unpack contents and ensure all necessary parts are present to complete assembly. Before each use inspect all parts for damage and wear and tear. Do not use parts that show any signs of damage or wear. Replace all worn and damaged parts with genuine NSP spare parts.



1. 30 / T40 Torx Allen key
2. Tef Gel anti-corrosion paste
3. Front Wing Mounting Screws M8 x 25 (3x)  
for Riblet 1025 / 1225
4. Front Wing Mounting Screws M8 x 30 (3x)
5. Mounting Plate
6. Mast 80
7. Fuselage 70
8. Board Mounting Hardware (4x)
9. Mast Mounting Screws M6 x 45 (6x)
10. Rear Wing Shims Kit (1° / 2° / 3°) for RW330 / 340 / 245
11. Rear Wing Shims Kit (0° / 1° / 2° / 3°) for all Riblet Rear Wing
12. Rear Wing Mounting Screws M6 x 20 (2x)
13. Rear Wing Mounting Screws M6 x 25 (2x)  
for RW340 / RW245

# Foil Installation:

## CAUTION:

Do not over-tighten the bolts as this will damage the foil.

1. Using the supplied Tef Gel, dab a small amount onto the threads of the two screws M6 screws\* for the fuselage.
2. Attach the rear wing as shown with the two M6 screws\*. Tighten by hand using the supplied T30 Allen key. Never use power tools.

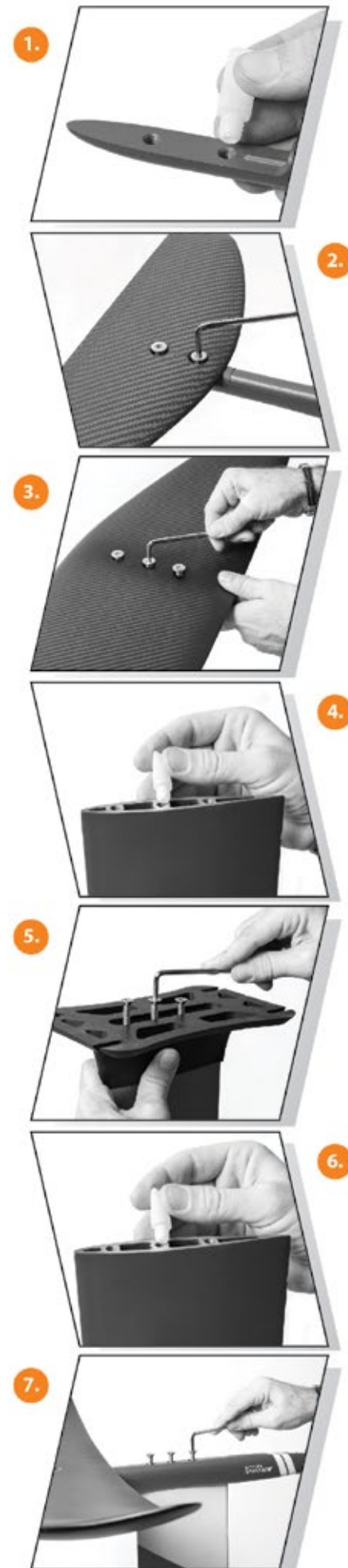
\* Depending on the rear wing you are using, either 20mm or 25mm screws are required. If your setup requires the 25mm this will be clearly stated on the rear wing itself.

3. Using the supplied Tef Gel, dab a small amount of the anti-seize grease onto the threads of the front two holes of the fuselage. Attach the front wing as shown with the three M8 screws\*. Tighten by hand using the supplied T40 Allen key.

\* Depending on the frong wing you are using, either 25mm or 30mm screws are required. If your setup requires the 30mm this will be clearly stated on the rear wing itself.

4. Using the supplied Tef Gel, dab a small amount of it onto the threads of the three holes in the top of the mast.
5. Attach the mounting plate to the top of the mast using three of the M6 x 45mm supplied screws. Tighten by hand using the supplied T30 Allen key.
6. Using the supplied Tef Gel, dab a small amount of it onto the threads of the three holes in the bottom of the mast.
7. Attach the fuselage to the bottom of the mast using remaining three M6 x 45mm supplied screws . Tighten by hand using the supplied T30 Allen key.

\* After every use disassemble, wash with water and dry each piece.



# Attaching the Foil to the Twin Track Mount

1. Dab a small amount of supplied Tef Gel to the threads of the four stainless nuts.
2. Thread M8 screws into stainless nuts just slightly (3-4 turns) and insert stainless nuts into track (2 screws in each track). Slide screws to opposite ends of the tracks.
3. With the mounting plate centered on the tracks, you can simply slide the screw into the recesses. Next, use the positioning guide to place and tune the desired position of your mounting plate.
4. Tighten your screws with the supplied T40 Allen key. Do not overtighten.

\* After use disassemble, wash with water and dry each piece.



**NSP** Has a wide variety of wings, after-market accessories and replacement parts available for your foil setup.



Scan the QR code below  
to see our complete Foil overview online: